

- 1 1.2 m wide slot-die, heatable up to 50°C
- 2 *atmoFlex 1250*, topview
- 3 *atmoFlex 1250*, rewinding section with lamination capabilities

atmoFlex 1250

ROLL-TO-ROLL PILOT WET COATING LINE

Fraunhofer Institute for Organic Electronics, Electron Beam and Plasma Technology FEP

Winterbergstr. 28
01277 Dresden, Germany

Contact persons

Dr. Steffen Günther
Phone +49 351 2586-137
steffen.guenther@fep.fraunhofer.de

Dr. Nicolas Schiller
Phone +49 351 2586-130
nicolas.schiller@fep.fraunhofer.de

www.fep.fraunhofer.de

The wet coating of polymer films and other flexible substrates and their modification allows these materials to be used in a wide range of products. Roll-to-roll plants allow coatings to be efficiently applied at favorable cost.

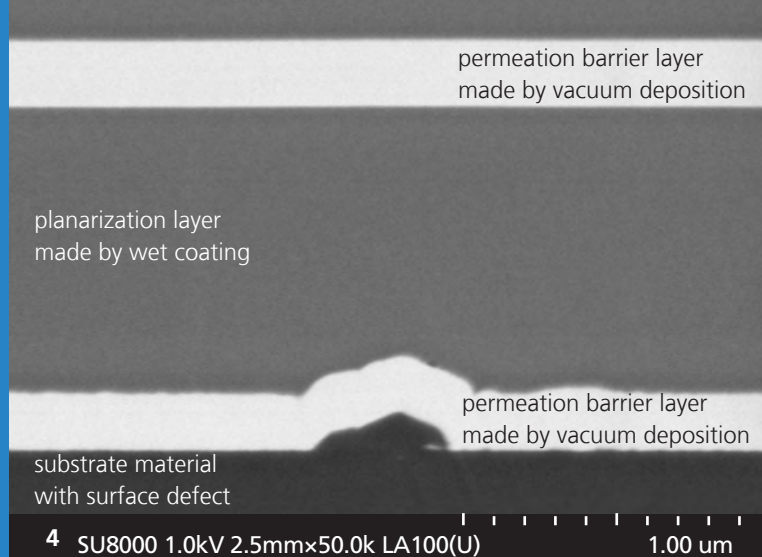
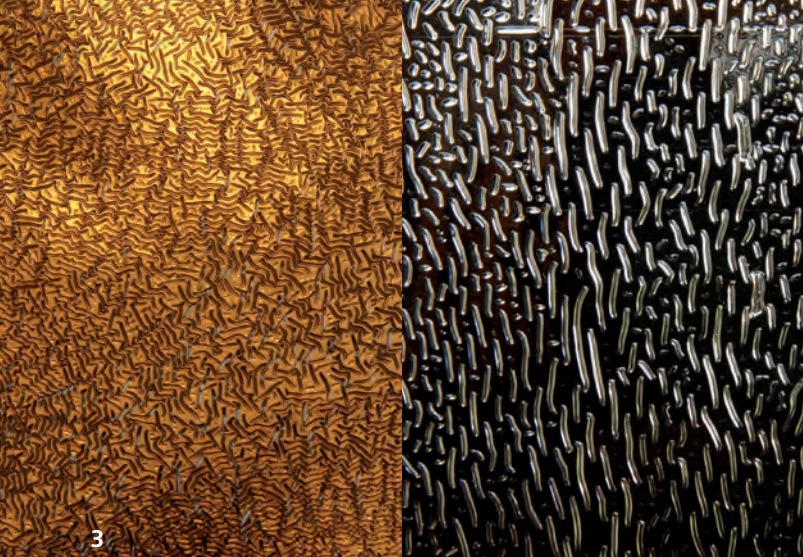
With the new coating line *atmoFlex 1250* (manufactured by 3D-Micromac GmbH, Germany) optical and decorative functional layers, abrasion resistant layers and structured layers manufactured by embossing processes can be applied. The maximum web speed of 150 m/min ensures highly productive coating processes. Wet and dry lamination processes are also possible with the *atmoFlex 1250*.

The wet coating takes place through a 1.2 m wide slot-die, ensure highly uniform

layers in web and cross-web direction. The crosslinking of lacquers will be done by means of an electron beam system. This system may be used also for post-curing of polymers or sterilization of polymer webs or textiles.

All rollers within the *atmoFlex 1250* are optimized regarding diameter and surface to handle pre-coated materials properly. Therefore vacuum coated materials maybe processed without altering the thin and delicate vacuum layers.

The *atmoFlex 1250* enables Fraunhofer FEP to provide a complete in-house process chain for research and development of multilayer systems, made by wet and vacuum coating processes at industrial scale.



3

4 SU8000 1.0kV 2.5mmx50.0k LA100(U)

1.00 µm

Technical specifications

coating width	1200 mm
substrate width	1250 mm
substrate thickness	10 ... 300 µm
outer diameter substrate roll	500 mm
winding speed	1 ... 150 m/min
electron beam energy	90 ... 150 keV
process modules	<ul style="list-style-type: none"> ▪ unwinder (supports masking films) ▪ corona pre-treatment ▪ contact cleaning ▪ slot-die coating ▪ wet and dry lamination ▪ electron beam curing and treatment ▪ rewinder (supports masking films)

Technology

- slot die
- lamination
- electron beam curing
- electron beam treatment
- in-line pre-treatment/contact cleaning
- optimized handling of pre vacuum-coated substrates

Our offer

- development of technologies for coating polymer films and other flexible materials
- coating tests of lacquers, cured by radiation for different applications (optical and decorative functional layers, abrasion resistant layers, permeation barrier layers)
- development and testing of key components
- sample provision for testing and marketing purposes, and pilot production
- studies on the efficiency of coating processes

3 Examples of textured surfaces, made by wet coating and cured by means of electron beam

4 SEM cross-section picture of a permeation barrier layer system, consisting of two vacuum deposited barrier layers and a planarization layer, deposited by wet coating – a surface defect of the substrate is effectively covered

5 Scheme of atmoFlex 1250



Equipment partner



Europa fördert Sachsen.
EFRE
Europäischer Fonds für regionale Entwicklung

Gefördert aus Mitteln der Europäischen Union

Funded by the European Union and the Free State of Saxony.
Funding reference: 3000651169



We focus on quality and the ISO 9001.